

## Gas Meter : General Type

### G1.6

Introduction G1.6



### Specification

<b>Max flow rate Qmax</b>	2.5m <sup>3</sup> /h
<b>Min flow rate Qmin</b>	0.016m <sup>3</sup> /h
<b>Pmax</b>	10kPa
<b>Volume per 1 Rev</b>	0.7ℓ/rev
<b>Max indication volume</b>	9999.999m <sup>3</sup>
<b>Min indication volume</b>	0.2ℓ
<b>Accuracy</b>	Qmin ≤ Q < 0.1Qmax : ±3%, 0.1Qmax ≤ Q ≤ Qmax : ±1.5%
<b>Inlet/Outlet Port location</b>	Inlet : left side, Out let : Right side
<b>Inlet/Outlet Port distance</b>	130mm
<b>Inlet/Outlet Port Screw Dim</b>	M34 × 1.5, M26 × 1.5, W36.3 × 11.5
<b>Normal operating Temp</b>	- 20 ~ +60
<b>Weight</b>	1.74

## Gas Meter : General Type

### G2.5

Introduction G2.5



### Specification

<b>Max flow rate Qmax</b>	4.0m <sup>3</sup> /h
<b>Min flow rate Qmin</b>	0.025m <sup>3</sup> /h
<b>Pmax</b>	10kPa
<b>Volume per 1 Rev</b>	1.2ℓ/rev
<b>Max indication volume</b>	99999.999m <sup>3</sup>
<b>Min indication volume</b>	0.2ℓ
<b>Accuracy</b>	Qmin ≤ Q < 0.1Qmax : ±3%, 0.1Qmax ≤ Q ≤ Qmax : ±1.5%
<b>Inlet/Outlet Port location</b>	Inlet : left side, Out let : Right side
<b>Inlet/Outlet Port distance</b>	130mm
<b>Inlet/Outlet Port Screw Dim</b>	M34 × 1.5, M26 × 1.5, W36.3 × 11.5
<b>Normal operating Temp</b>	- 20°C ~ +60°C
<b>Weight</b>	1.85kg

## Gas Meter : General Type G4

Introduction G4



### Specification

Max flow rate Qmax	6.0m <sup>3</sup> /h
Min flow rate Qmin	0.04m <sup>3</sup> /h
Pmax	50kPa
Volume per 1 Rev	1.2ℓ/rev
Max indication volume	99999.999m <sup>3</sup>
Min indication volume	0.2ℓ
Accuracy	Qmin ≤ Q < 0.1Qmax : ±3%, 0.1Qmax ≤ Q ≤ Qmax : ±1.5%
Inlet/Outlet Port location	Inlet : left side, Out let : Right side
Inlet/Outlet Port distance	130mm
Inlet/Outlet Port Screw Dim	M34 × 1.5
Normal operating Temp	- 20°C ~ +60°C
Weight	1.85kg

## Gas Meter : General Type G6 with span 130mm



### Specification

Max flow rate Qmax	10.0m <sup>3</sup> /h
Min flow rate Qmin	0.06m <sup>3</sup> /h
Pmax	50kPa
Volume per 1 Rev	2.3ℓ/rev
Max indication volume	99999.999m <sup>3</sup>
Min indication volume	0.2ℓ
Accuracy	Qmin ≤ Q < 0.1Qmax : ±3%, 0.1Qmax ≤ Q ≤ Qmax : ±1.5%
Inlet/Outlet Port location	Inlet : left side, Out let : Right side
Inlet/Outlet Port distance	130mm
Inlet/Outlet Port Screw Dim	M34 × 1.5
Normal operating Temp	- 20°C ~ +60°C
Weight	3.4kg

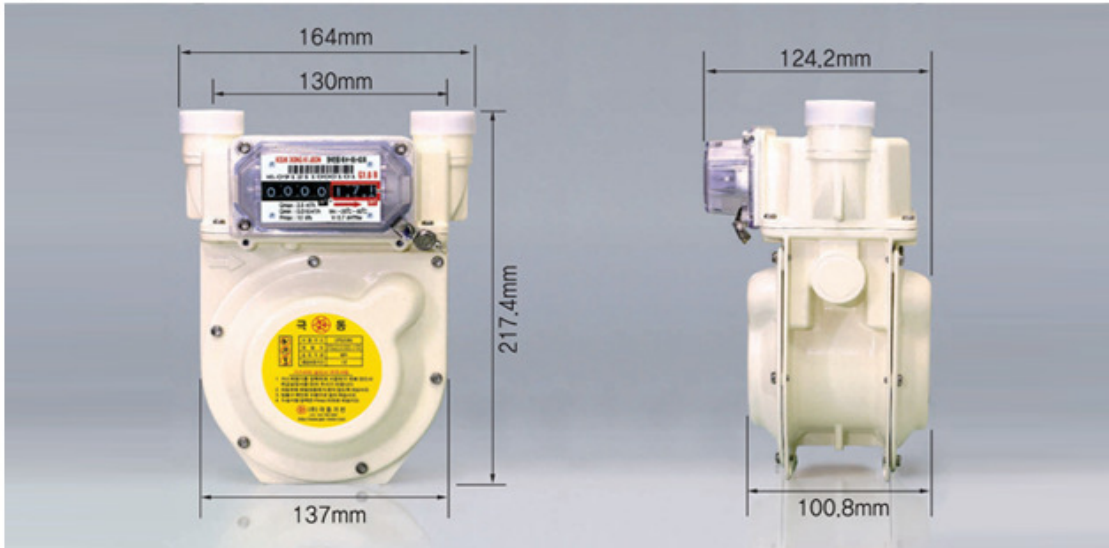
## Gas Meter : General Type G6 with span 250mm



### Specification

Max flow rate Qmax	10.0m <sup>3</sup> /h
Min flow rate Qmin	0.06m <sup>3</sup> /h
Pmax	50kPa
Volume per 1 Rev	2.3ℓ/rev
Max indication volume	99999.999m <sup>3</sup>
Min indication volume	0.2ℓ
Accuracy	Qmin ≤ Q < 0.1Qmax : ±3%, 0.1Qmax ≤ Q ≤ Qmax : ±1.5%
Inlet/Outlet Port location	Inlet : left side, Out let : Right side
Inlet/Outlet Port distance	250mm
Inlet/Outlet Port Screw Dim	PF 1½
Normal operating Temp	- 20°C ~ +60°C
Weight	3.8kg

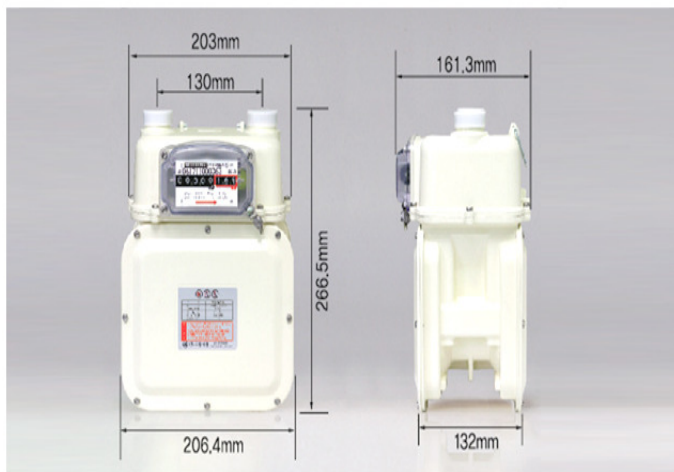
제품크기



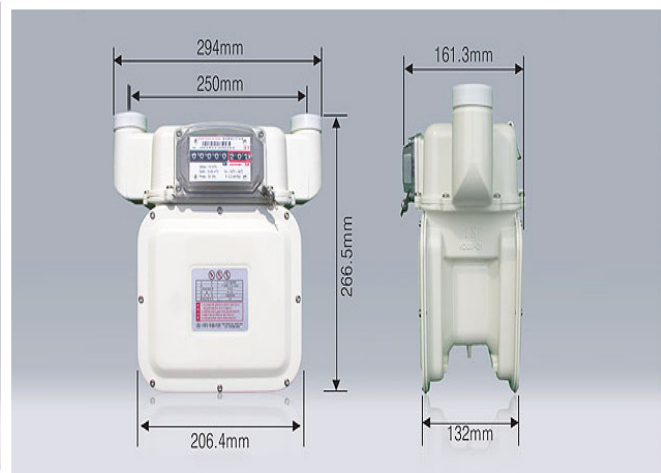
**(G1.6, G2.5, G4, G6 General type gas meter)**

- Inlet/Outlet port distance  
(G1.6 : 130.00mm, 100.00mm)  
(G2.5, G4 : 130.00mm)
- Inlet/Outlet port screw dimension  
(130.00mm(PT3/4) : M34X1.5, M26X1.5, W36.3X11.5 )  
(100.00mm(PT1/2) : M25X1.5)

제품크기



제품크기



**(G6 General type gas meter)**

- G6 Inlet/Outlet port distance (2type 130.00mm, 250.00mm)
- G6 Inlet/Outlet port screw dimension  
(M34X1.5, PF1 1/4", 130.00mm)  
(PF1 1/4", 250.00mm)